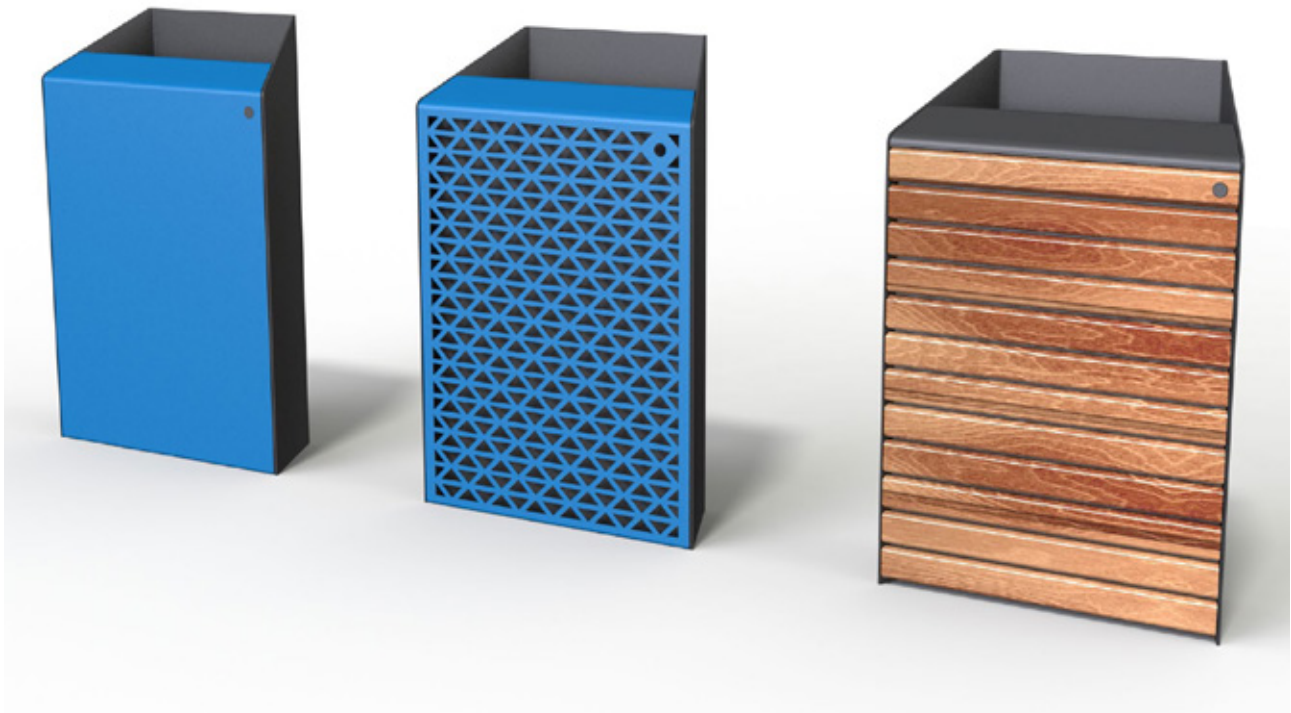


Haehae Bin



Haehae Bin collection (Solid, Tohu Perforation and Hardwood Timber Batten door panels)

PRODUCT FEATURES

- All fixings: Stainless Steel 316
- Supplied fully assembled
- Finished in any standard powder coat colour

DIMENSIONS

- Height 940mm, Width 620mm, Depth 242mm
- Capacity 60L

BODY SPECIFICATIONS

Body

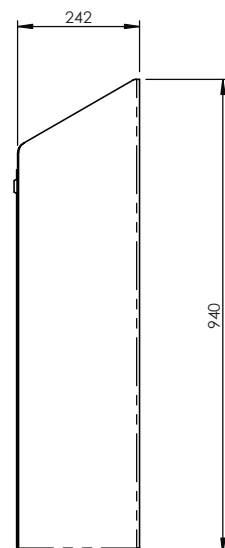
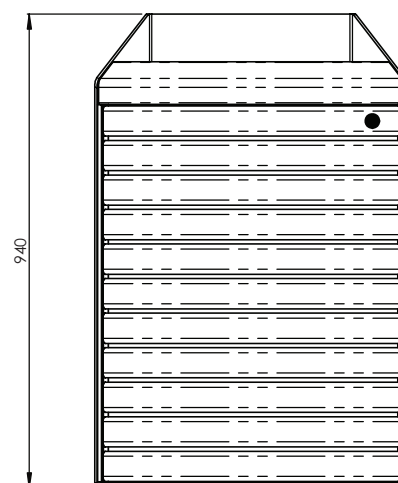
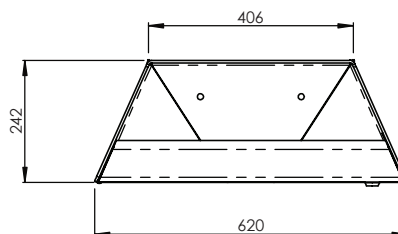
- 5.0mm Pre Galvanised Steel

Door

- 2.0mm Pre Galvanised Steel
- Fitted with Southco lock
- Hardwood Timber Battens (Horizontal)
- Perforated Material (see next page)
- Custom (see next page)
- Solid, plain door

Fixing

- Surface Mount, Back to Back, Wall or Pole Mounted

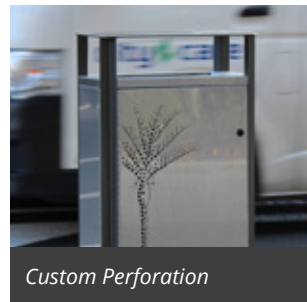
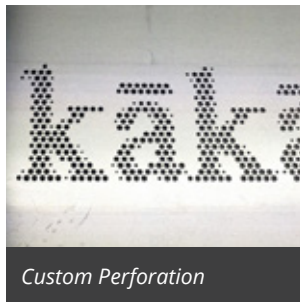
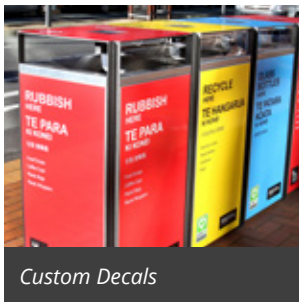


Haehae Bin

Standard Perforated Options



Custom Options



Customise your own design or logo. Contact us to find out more about our perforated and laser cut customisation options.



Haehae Bin

Care & Maintenance Suggestions

Our products are constructed using a variety of different materials, all of which are highly corrosion resistant. Despite this, some care is required to maintain their good looks. The extent to which cleaning is required will depend on a number of factors including environmental conditions, construction activity and level of use.

MAINTAINING THE METAL SURFACES

To maintain the original appearance of the metal, it should be cleaned regularly using warm soapy water.

Stainless Steel: Rust spots or 'tea stains' can occur on the surface of the material which are normally caused by contamination from ordinary mild steel, particularly in areas where construction work has been undertaken. Such stains can be removed with careful use of an abrasive pad, being mindful of the direction of the grain.

Galvanised Steel: If the galvanised coating is significantly penetrated, a zinc rich primer should be applied to the damaged area to maintain its corrosion resistance.

MAINTAINING THE PAINTED OR POWDER COATED SURFACES

Clean regularly with warm soapy water. Should the paint become chipped or scratched, it can be touched up using an acrylic based paint.

MAINTAINING THE TIMBER

Dirt can be removed using mild detergents. If the timber is left untreated, over time it will gradually change to a silvery grey colour. The timber will remain structurally sound without further maintenance.



Tilley Group Ltd

DOC 1015/1

WELLINGTON

1-7 Jean Batten St, Rongotai, Wellington 6022
PO Box 14122, Kilbirnie, Wellington 6241, New Zealand
T +64 4 387 7009 F +64 4 387 9114 E wgtnsales@tilleygroup.co.nz

AUCKLAND

36 Aranui Rd, Mt Wellington
Auckland 1060, New Zealand
T +64 9 527 7385 E akldsales@tilleygroup.co.nz

CHRISTCHURCH

Level 1/306 Port Hills Rd, Hillsborough
Christchurch 8022, New Zealand
T +64 3 331 6565 E chchsales@tilleygroup.co.nz