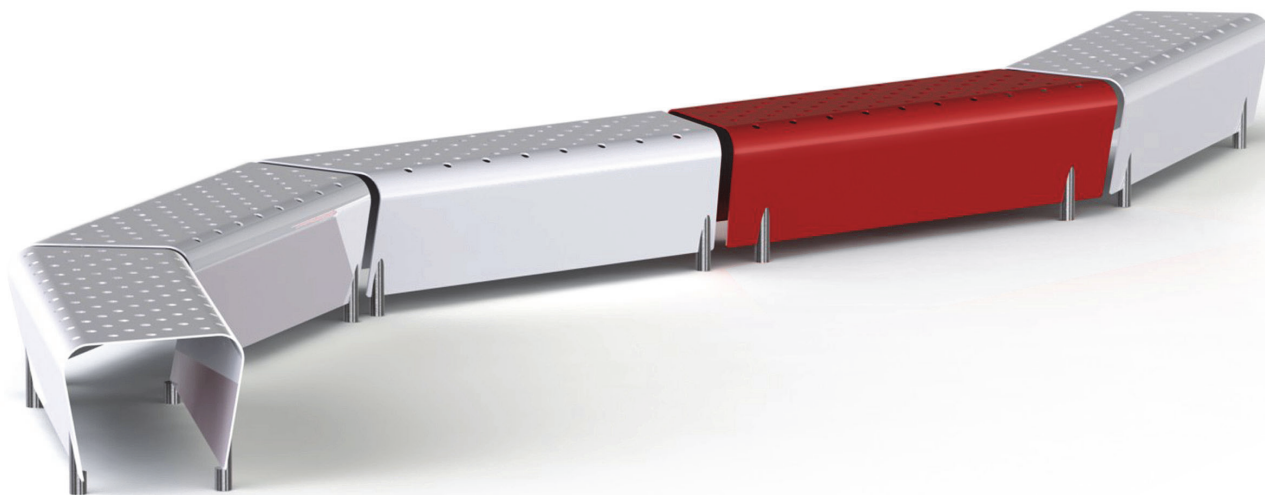


t3 trapezoidal bench



Above, trapezoidal t3 bench in gloss white and red with stainless steel feet.

description

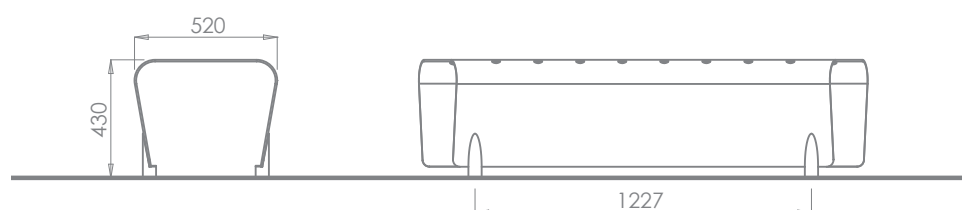
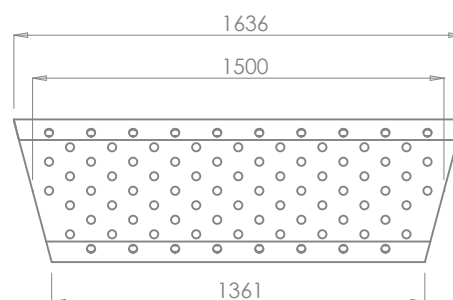
Formed aluminium body with powder coated finish on brushed 316 grade stainless steel feet.

dimensions (trapezoidal)

Length 1500mm (on ctr. line), width 520mm, height 430mm.

options

Choice of colours.
Straight or trapezoidal.



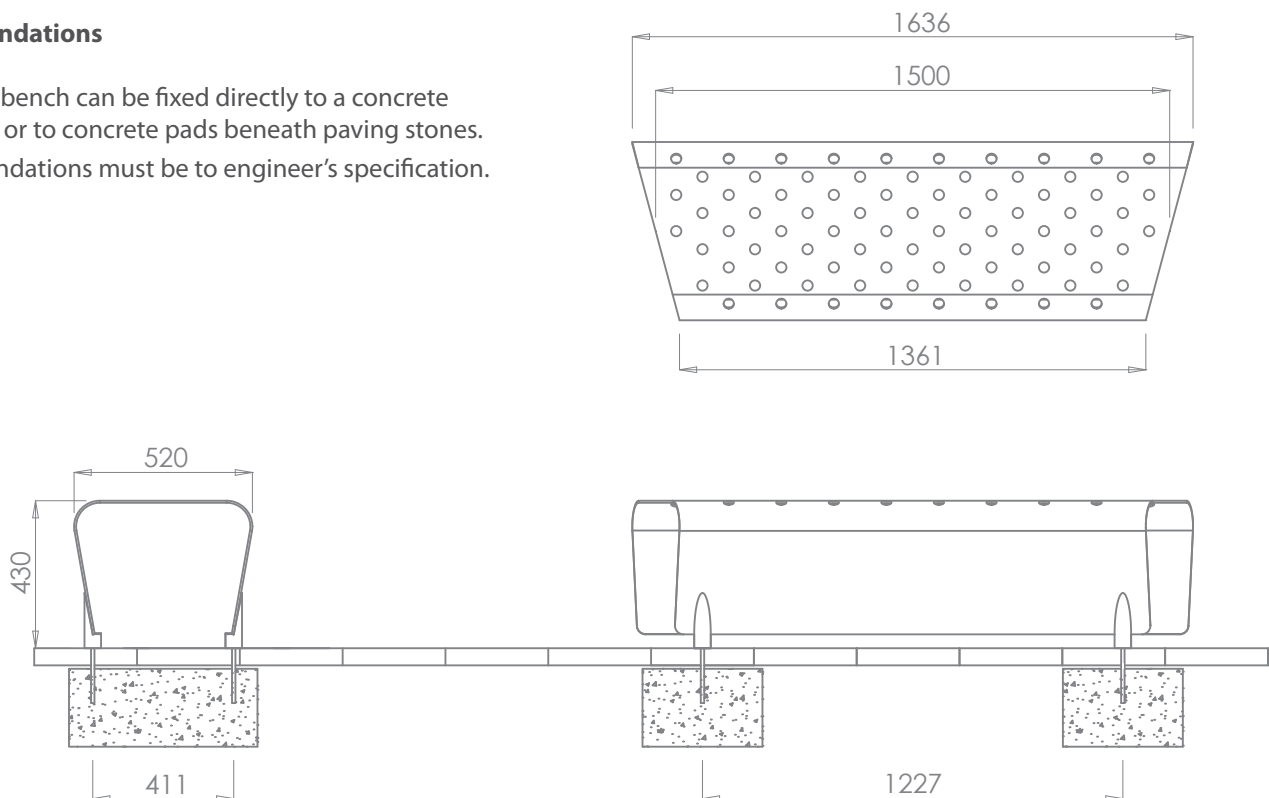
t3 Fixing Instructions

(for areas already paved)

- 1 Insert the stainless steel M10 threaded bar provided into each of the four feet and screw to a depth of approximately 10mm.
- 2 Determine the location for the bench. Remove the pavers and excavate two holes at centres 1227mm.
- 2 Fill the holes with 35N20 concrete up to 15mm below the level of the underside of the pavers ensuring a good smooth surface finish.
- 3 Allow sufficient time for the concrete to set then apply a layer of dry sand/cement mix over the pad. Compact and adjust to bring this to the level of the underside of the paving.
- 4 Replace the paving slabs and ensure that they are well bedded in.
- 5 Place the bench in the desired location. Mark around the projected threaded bars where they meet the ground making sure this is done accurately.
- 6 Remove the bench and drill through the paving slabs into the concrete pad below as marked. IMPORTANT, the depth of the hole must be sufficient to allow the bar to be fully embedded in the concrete rather than partially in the paver and partially in the concrete.
- 7 Insert chemical fixing into each hole, Omos recommends Hilti HIT-HY 150. Reposition the bench by placing the bar into the 4 no. holes and leave sufficient time to cure.

Foundations

The bench can be fixed directly to a concrete slab or to concrete pads beneath paving stones. Foundations must be to engineer's specification.



Above, fixing details.

t3 Care and Maintenance Guidelines

The t3 bench is constructed from powder coated formed aluminium with brushed 316 grade stainless steel feet. The materials have been selected for their excellent outdoor durability as well as their aesthetic properties.

Some care is required to maintain the product's original appearance. The extent to which maintenance is required will depend on a number of factors including environmental conditions, construction activity and level of use.

Maintaining the painted aluminium

The t3 bench is finished in polyester powder, a plastic coating which is baked onto the components prior to assembly. This is a highly durable finish which will last for many years. To maintain the original appearance of the metalwork it should be cleaned regularly using warm soapy water.

Avoid the use of abrasive cleaners as they may damage the surface finish. Should the paint become chipped or scratched it can be touched up using acrylic based paint. Where the surface becomes damaged clean with a wire brush or sand, then paint with a spirit or synthetic based top coat. For further advice contact Omos on + 353 45 899802.

Maintaining the stainless steel components

Prior to shipping all our stainless steel has been passivated to ASTM A380 and ASTM 976 01-8.1 to ensure the highest standard.

Clean the stainless steel components using warm water with a mild detergent with a non abrasive cloth or sponge. Heavier stains may require the use of a nylon scouring pad. As a rule always start with the least severe method of cleaning as the use of scouring pads or scotch bright may result in altering the surface texture. In the case of a bead blasted finish, where abrasive cleaning is required, always use a random circular rubbing action. In the case of brushed finishes the surface consists of uniform fine 'scratches' running in one direction so where abrasive cleaning is required always use a straight back and forward rubbing action in the direction of the grain.

Rust spots or 'tea stains' can occur on the surface of the material, these are normally caused by contamination from ordinary mild steel, particular in areas where construction work has been undertaken. Such stains can be removed using an abrasive pad as described above.

In cases where the surface is severely stained as a result of severe environmental conditions or scratched due to misuse, it may still be possible to restore the original finish. Contact Omos for advice on such issues.

There are many stainless steel polishes available to enhance the surface finish. Omos recommends 'Avesta Finishing chemicals' and can advise where to purchase.