

Horizon tilt bin



Featuring

- Increased capacity, 82 Litres (up from 60)
- South Co tamper proof locking system
- Cast Aluminium cigarette stubbing plate
- Fits existing Horizon Tilt Bin ground fixings
- 3mm Marine Grade Spun Aluminium Lid

The best just got even better. Increased capacity and a series of new metal wrapper designs are only part of the improvements to New Zealand's best tilting litter system. The new and improved Horizon Tilt Bin, features a new South Co locking system, marine grade Aluminium lid for the harshest of coastal environments and a cast alloy cigarette stubbing plate.





Horizon tilt bin

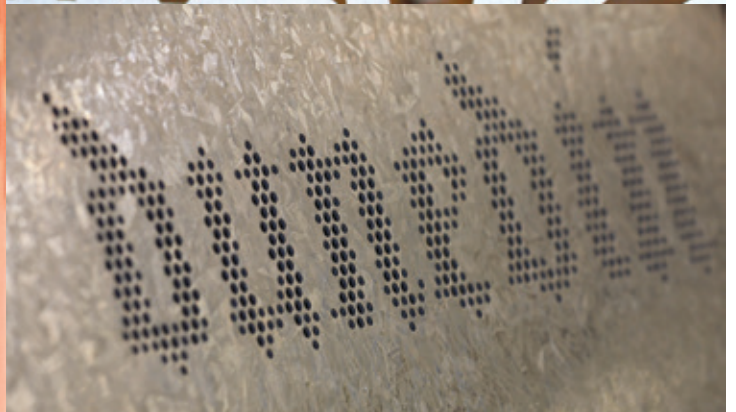
PRODUCT OPTIONS



Corten material for aesthetic and outstanding longevity



Back to back configuration



Laser cut or perforated bespoke and corporate wrappers

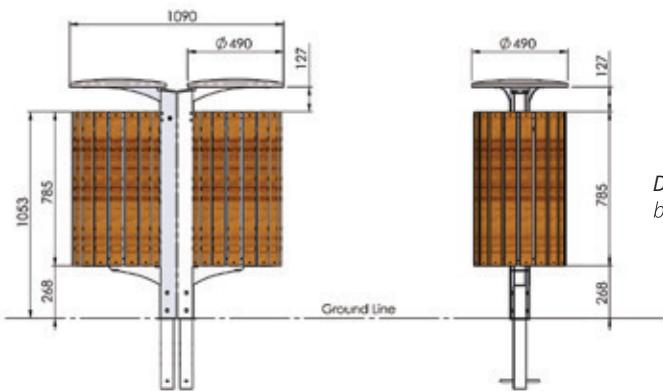


www.facebook.com/tilleygroup.co.nz

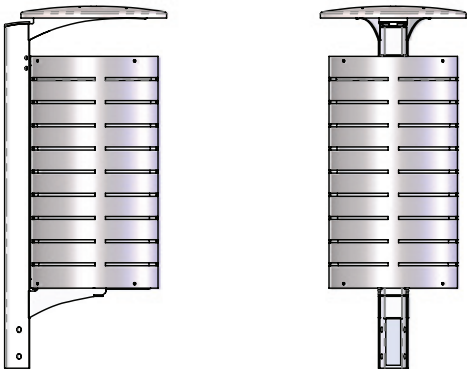


Horizon tilt bin

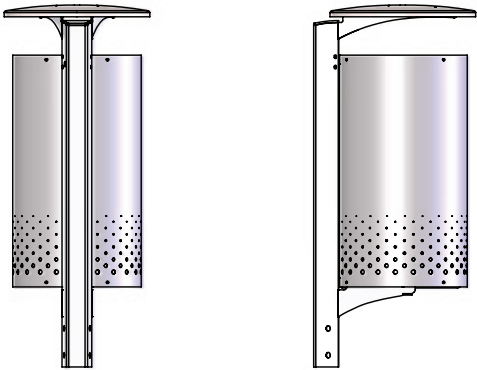
PRODUCT DIMENSIONS AND WRAPPERS



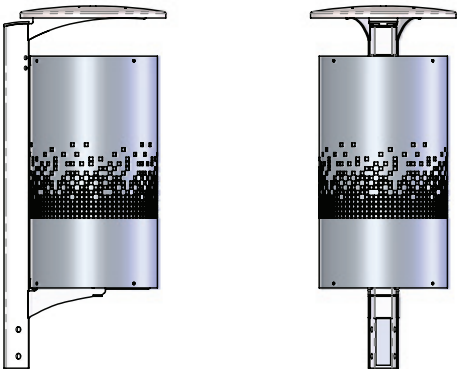
Dimensions showing back to back and singular configuration



Slotted Wrapper



Fadeout Wrapper



Pixel Wrapper



Horizon tilt bin

PRODUCT INFORMATION

Looking for a different look? New Horizon is available in a choice of alternative materials such as Corten and Stainless Steel. Our versatile design enables a multitude of configurations such as back to back or applications such as recycling stations. Tilley's superior manufacturing facility enables the imagination to run wild with bespoke laser cut and perforated wrapper designs and a variety of colour choices.

FEATURES

High Strength laser cut and fabricated Steel construction.

- Supplied fully assembled
- Galvanised Steel liner with handles
- Natural hot dipped galvanised steel finish
- Stainless Steel and Corten available on request

PRODUCT SPECIFICATION

Body

- NZ grown timber batten, Eucalyptus Saligna,
- Pre-galvanised Steel. Aluminium, Stainless Steel and Corten wrappers on request

Frame

- 5mm HRMS Hot Dip Galvanised Steel, Stainless Steel and Corten available on request

Lid

- 3mm Marine Grade Aluminium

Base

- Mild Steel Hot Dip Galvanised Steel

Fixing

- Surface or Inground



MANUFACTURING ENGINEERS

WELLINGTON HEAD OFFICE

1-7 Jean Batten St, Rongotai, Wellington 6022
PO Box 14122, Kilbirnie, Wellington 6241, New Zealand
T +64 4 387 7009 **F** +64 4 387 9114 **E** wgtnsales@tilleygroup.co.nz

AUCKLAND SALES OFFICE

36 Aranui Rd, Mt Wellington, Auckland 1060
T +64 9 527 7385 **F** +64 9 527 7390 **E** akldsales@tilleygroup.co.nz

CHRISTCHURCH SALES OFFICE

Level 1, 4/306 Port Hills Rd, Hillsborough, Christchurch 8022
T +64 3 331 6565 **E** chchsales@tilleygroup.co.nz



www.facebook.com/tilleygroup.co.nz

www.tilleygroup.co.nz